

cruisejobfair



EVENT SPONSOR



Barcelona 2026

Exhibitor Guide

Contents

Exhibitor Information	3
Exhibitor Stands, Packages and Prices.....	4
Packages.....	4
Bookings	4
Stand Extras	4
Networking Pass	5
Venue Information	6
Location	6
Floor plan	6
On-Site Facilities	7
Refreshments	7
Internet Access	7
Parking	7
Event Schedule	7
Build-up & Break-down Times	7
Accommodation	8
Deliveries and Collections	9
Terms and Conditions	9

Event Information

The Cruise Job Fair will be arriving in Barcelona for the very first time, taking place at the World Trade Centre, just a short distance from the city's cruise terminal.

We expect around 300–400 candidates from a wide range of departments. Most attendees will be from Spain, with additional participants travelling from abroad, bringing together participants from across Europe.

All cruise lines, recruitment agencies, concessions, training providers and other organisations involved in the cruise, superyacht and wider maritime sectors are warmly invited to join us.



We would like to thank Viking Cruises for sponsoring this year's Barcelona job fair.

cruisejobfair

Barcelona, Spain

Thursday, 26 February 2026

World Trade Center Barcelona, Port Vell Room, Moll de Barcelona

Exhibitor Stands, Packages and Prices

Packages

We offer two packages for you to choose from to best suit your needs and requirements, as well as a multi booking discount if you attend more than one event:

- **Standard** Package
- **Standard Plus** Package

All package pricing and details of what is included in each package can be found at www.cruisejobfair.com/exhibitors/packages/

Stands consist of 1 or 2 tables with seating and reserved floor space. Each stand will be positioned with a wall or locked doors behind them; however, no banners or posters may be fixed to the wall. Please use free-standing banners or stand backgrounds.

Bookings

Once you have selected your package, please visit: www.cruisejobfair.com/exhibitors/booking/ and complete the online booking form. One of our team will then contact you to discuss and confirm your requirements for the day.

Stand Extras

TVs

Please let us know if you would like to book a TV with a stand for your stand. We have a limited number available to hire for the day.

50" TV ... £175 / €200 / \$230
65" TV ... £205 / €232 / \$270

Electricity

There is a charge of €20 per stand for electricity at this venue.

Candidate information scanners

Each visitor to the job fair will have their ticket scanned as they arrive at the venue, and they will be given a sticker which you can then scan when you meet them at your stand.



We advise you to hire a hand-held scanner for the day – enough for the number of people on your stand, so that everyone can scan all of the candidates that you see during the course of the day. After the event, you will receive a download of all of the information about who has visited your stand that day - saving you valuable time both on the day and with any follow up required. This eliminates the need to collect and store paper CVs and is **entirely in line with the GDPR legislation**.

You will know exactly who your team has spoken to, where they are from, whether they have cruise experience, which departments they are interested in, and you can download copies of their CVs (for those that have uploaded their CV prior to the event).

The cost to hire one scanner and receive all of the data post event is **£85**. Every additional scanner for your stand would be **£15**. Please contact us as soon as possible if you are interested in adding this service to your stand.

Cost for 1 hand-held scanner and data: £85 / €95 / \$100

Each additional scanner: £15 / €17 / \$20

Networking Pass

The Networking Pass allows professionals working within the cruise industry to visit the job fair and meet colleagues and partners from other companies.



Please note: anyone who networks at the event without a valid pass will be asked to leave.

Cost: **£120 / €140 / \$165** per company

All quoted prices are exclusive of VAT for UK-based businesses.

Venue Information



World Trade Center Barcelona

Port Vell Room

1ª planta Edif. Este

Moll de Barcelona

08039 Barcelona

Spain

Location

The Barcelona job fair will be held at the **World Trade Center**, a modern multipurpose convention centre near the cruise port.

When you arrive, head to the **Port Vell Room** to register for the event.

Visit www.cruisejobfair.com/barcelona/directions/ for more detailed information about the venue's location.

Floor Plan



The Job Fair will take place in the **Port Vell Room**.

The up to date floor plan with a list of available and taken stands is available on the event website:

www.cruisejobfair.com/exhibitors/barcelona/

On-Site Facilities

Refreshments

A coffee station will be available during the networking hour (from 10.00 to 10.45am). There is also a cafe and a restaurant in the convention centre.

You will be able to pre-order lunch boxes and we will advise you of the details nearer the time.

Internet Access

Wi-Fi internet connection is available from the venue for €3 per day.

Parking

Public parking is available at €29 per car per day.

Event Schedule

The event will be opening its doors to visitors from 11:00 until 16:00.

Build-up & Break-down Times

Exhibitors will have access to the hall between 9:00 – 10:00 on the day of the show to set-up their stands.

Visitors with networking passes will be admitted from 10:00.

Break down of stands must be carried out between 16:00 – 17:00 and must be completed by the end time as the hall will then be closed.

Any items left on stands at the end of the day will be deemed as rubbish and disposed of by the venue, and the exhibitor will be charged for this service if required.

Accommodation

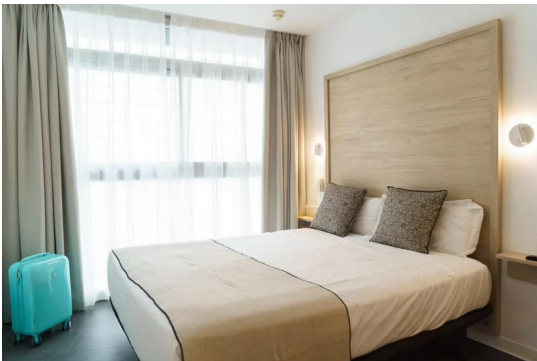
The **Eurostars Grand Marina Barcelona Hotel** is located within the *World Trade Centre* complex. Several other hotels are also situated nearby.



[Eurostars Grand Marina Barcelona Hotel](#)

within the WTC building

from €142 per room per night



[Hotel Casa Lit Barcelona](#)

900 m / 13 min walk

from €80 per room per night



[Hotel SERHS Del Port](#)

900 m / 13 min walk

from €100 per room per night



[Sixties Ramblas](#)

950 m / 15 min walk

from €134 per room per night

Deliveries and Collections

Unfortunately, deliveries to the venue and collections after the event are not possible. We recommend bringing your materials with you to avoid any issues with couriers or customs, which some attending companies have encountered in the past.

Terms and Conditions

This year, we have updated our pricing structure. Companies that reserve their stands well in advance can benefit from **Early Bird** discounted rates. In addition, those who pay their invoice before the cutoff date will receive a further **10% Early Payment** discount. This amount will be credited to your account and can be used towards extras such as TV screens, scanners, lunches and more after the event.

Full pricing details and all discount cutoff dates are available on our website:

www.cruisejobfair.com/exhibitors/packages

Our complete Terms and Conditions can also be found on the website:

www.cruisejobfair.com/download/Exhibitor-Terms-and-Conditions.pdf